



Multiple Application Platform Server

MAPS 6.10.2 Release Guide

Product version 6.10.2

Last updated 6/29/2023

Trademark, Publishing Statement, and Copyright Notice

© 1998-2023 Evisions. All rights reserved.

This software and related documentation are provided under a license agreement containing restrictions on use and disclosure and are protected by intellectual property laws. No part of this document may be reproduced, stored in or introduced into a retrieval system, or transmitted in any form or by any means (electronic, mechanical, photocopying, recording, or otherwise), or for any purpose, without the express written permission of Evisions.

The information contained herein is subject to change without notice and is not warranted to be error-free. Product features referenced herein for a period of time may not match product contents. Evisions does not warrant that the functions contained in the software will meet your requirements or that the operation of the software will be uninterrupted or error free. Evisions reserves the right to make changes and/or improvements in the software without notice at any time.

This software and documentation may provide access to or information on content, products, and services from third parties. Evisions and its affiliates are not responsible for and expressly disclaim all warranties of any kind with respect to third-party content, products, and services. Evisions and its affiliates will not be responsible for any loss, costs, or damages incurred due to your access to or use of third-party content, products, or services. Evisions does not endorse the content or developer of any products or web sites mentioned.

All information in this guide is designed for instructional purposes only. Evisions makes no guarantees regarding the accuracy or performance of any techniques used in this guide. Software configurations and environments may vary, and some techniques used in this guide may not operate efficiently under all configurations. This guide may contain examples of various technologies or products, which are the sole property and responsibility of their creators.

Trademarks are the property of the respective owners for any products mentioned herein.

Table of Contents

What's New in MAPS 6.10.2?	4
MAPS Updates	4
Product versions	4
Installation	4
1. Prepare test environment and ensure current backup	4
2. Check for updates	4
3. Allow update process to complete	5
4. Verify the latest version is installed	5
Primary Groups	6
Enabling Primary Groups in MAPS Config	6
Require Users to Choose	7
The Primary Group Menu	7
Data Connections	8
Selecting a Primary Group in the Argos Web Viewer	9
MAPS 6.10.2 Release Notes	10
Getting Help	11
Can't find what you're looking for?	11

What's New in MAPS 6.10.2?

Evisions is pleased to announce the release of MAPS version 6.10.2, which includes the following changes:

- MAPS Config now supports single sign-on and authentication through SAML servers.
- Added the option to enable primary group selection for Argos users.
- When single sign-on is required, the eLauncher sign in screen will now hide the username and password fields.
- Resolved an issue where CAS and SAML synchronized users were being prompted to change the password of the associated MAPS user.
- Additional enhancements and resolved issues.

We appreciate the feedback received from all of our users. Our products would not be what they are today without your continued support. If you have any comments or suggestions, please do not hesitate to [open a case with the HelpDesk](#) and let us know.

MAPS Updates

MAPS 6.10.2 is an update to the MAPS service (which includes the eLauncher) and MAPS Config. You should upgrade both components concurrently.

[Product versions](#)

The latest versions of MAPS included in this release are:

- MAPS service 6.10.2.2678 / MAPS Config 6.10.2.1495 / eLauncher 6.10.0.4

Installation

[1. Prepare test environment and ensure current backup](#)

We highly recommend installing updates in a test environment before applying them to your production environment. You should make sure that a current backup is available in case of any unforeseen issues. To create a full backup of your MAPS environment, go to the **Server -> Backups** screen in MAPS and click **Backup Now**.

[2. Check for updates](#)

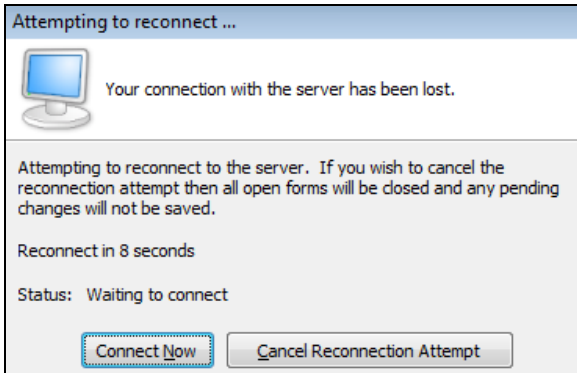
Click the **Check for Updates** button in MAPS Config to view available updates.

If you need to apply updates prior to the 6.10.2 update, please refer to the appropriate [release guide\(s\)](#) before proceeding.

It is possible to apply updates when users are on the system; however, to avoid the possibility of losing unsaved work we recommend applying updates during off hours.

[3. Allow update process to complete](#)

When applying updates to the MAPS service you will be temporarily disconnected from the server:



The update process may take a few minutes to complete. **Do NOT cancel the reconnection attempt or manually restart the server.** You will automatically be reconnected to the server once the update has been applied.

[4. Verify the latest version is installed](#)

To ensure that you are on the most current version, continue clicking the **Check for Updates** button and applying the updates until no new updates are available.

[Please Provide Us with Your Feedback!](#)

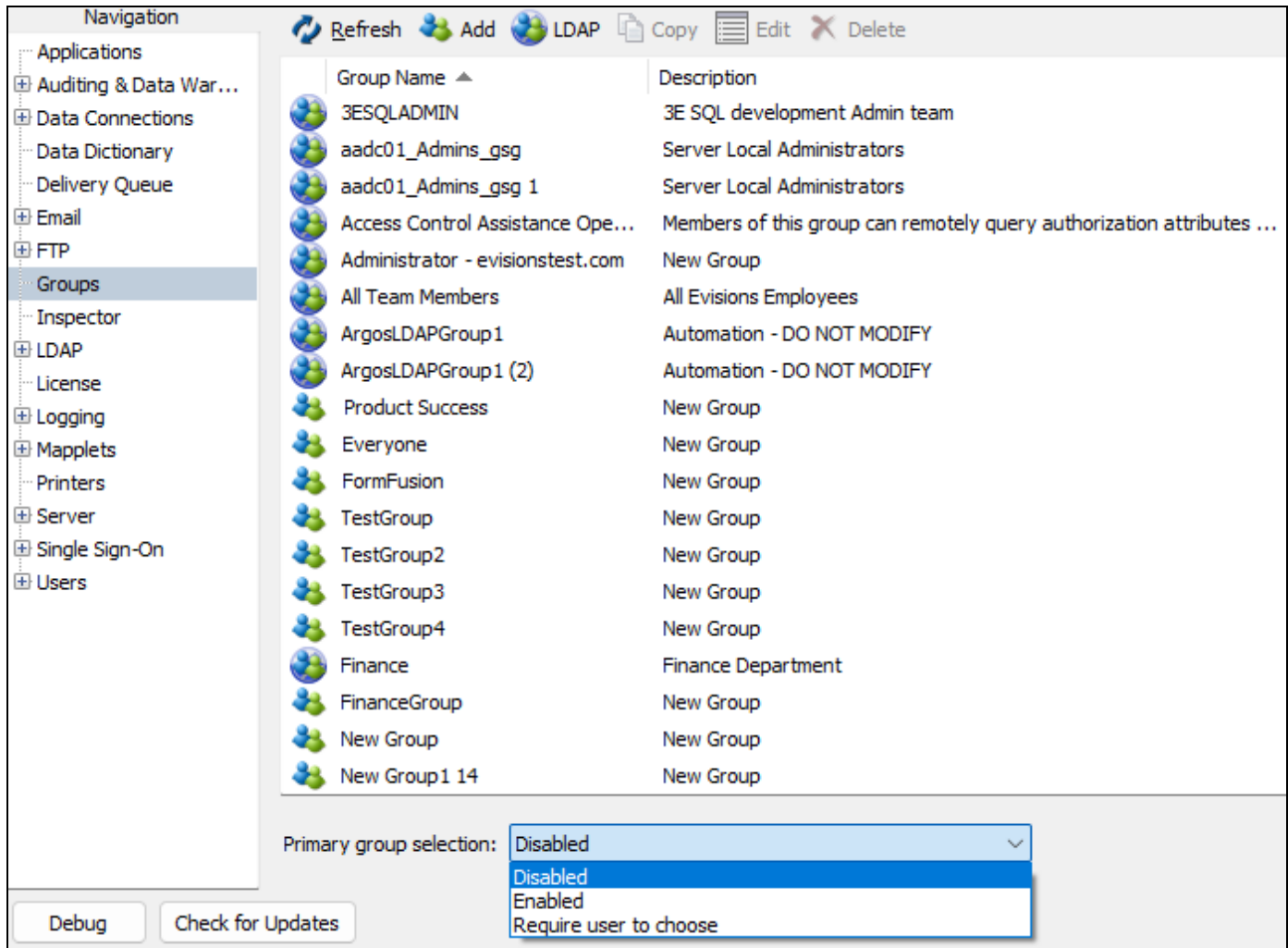
As always, we welcome any [feedback or suggestions](#) you may have. We very much appreciate your thoughts and suggestions, so please keep the great ideas coming!

Primary Groups

The **Primary group** option allows users to define which security group's settings they'd prefer to use each time they sign in to Argos. This can be useful when a user belongs to multiple groups but wants to specify explicitly which group's security rules should be used.

Enabling Primary Groups in MAPS Config

To enable the use of primary groups, navigate to the Groups tab in MAPS Config and locate the **Primary group selection** dropdown found near the bottom of the window.



Group Name	Description
3ESQLADMIN	3E SQL development Admin team
aadc01_Admins_gsg	Server Local Administrators
aadc01_Admins_gsg 1	Server Local Administrators
Access Control Assistance Ope...	Members of this group can remotely query authorization attributes ...
Administrator - evisionstest.com	New Group
All Team Members	All Evisions Employees
ArgosLDAPGroup1	Automation - DO NOT MODIFY
ArgosLDAPGroup1 (2)	Automation - DO NOT MODIFY
Product Success	New Group
Everyone	New Group
FormFusion	New Group
TestGroup	New Group
TestGroup2	New Group
TestGroup3	New Group
TestGroup4	New Group
Finance	Finance Department
FinanceGroup	New Group
New Group	New Group
New Group1 14	New Group

Primary group selection: Disabled ▾

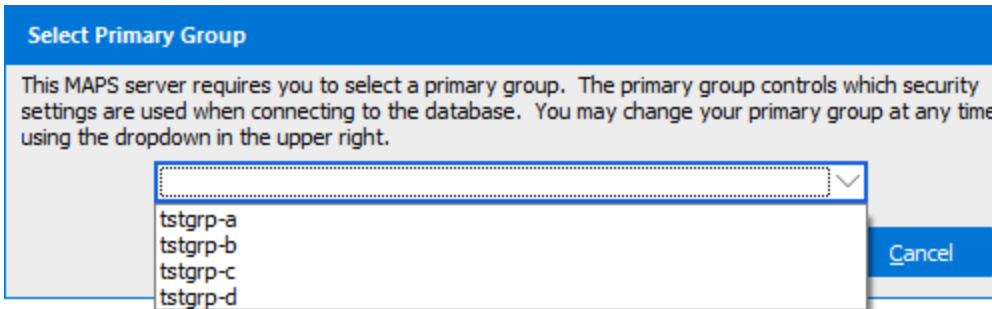
- Disabled
- Enabled
- Require user to choose

This dropdown regulates the visibility of the **Primary group** dropdown in Argos and the Argos Web Viewer. The options in this menu are:

- **Disabled** - the Primary group dropdown will not be visible to Argos users. This is the default setting.
- **Enabled** - the Primary group dropdown will be visible to Argos users, though a group selection will not be required.
- **Require user to choose** - users will be required to choose a primary group upon signing in, if one has not already been selected.

Require Users to Choose

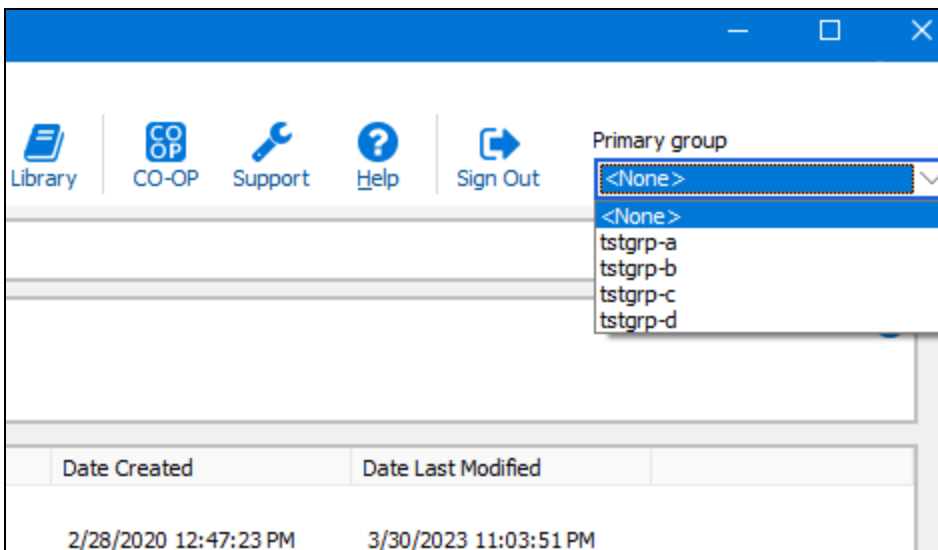
If a MAPS administrator has selected **Require users to choose** from the **Primary group selection** in MAPS Config, then the Argos user will be prompted to choose their primary group upon signing in.



Under this selection the **None** option will not be available in the **Primary group** dropdown in Argos.

The Primary Group Menu

Once enabled in MAPS Config, the **Primary group** dropdown menu can be found to the right of the main Argos toolbar.

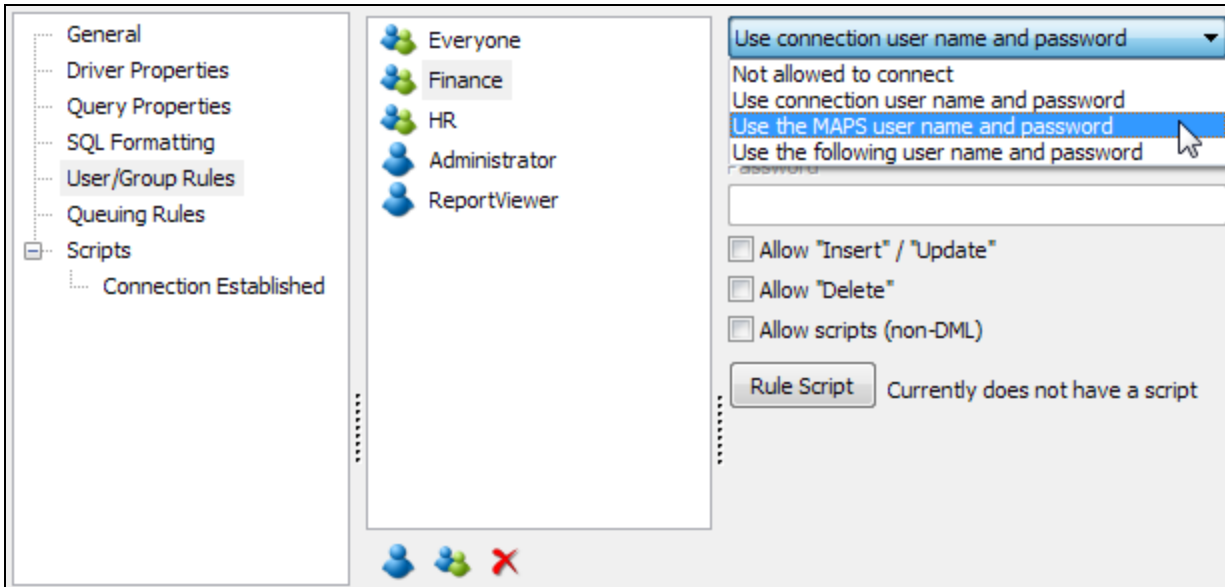


Note: Even when enabled, this menu will only be visible if the user belongs to two or more groups (not including the **Everyone** group).

Data Connections

Primary groups work in conjunction with data connections. MAPS will attempt to use a primary group's sign in credentials rule when connecting to a data source. If a group does not exist in the User/Group Rules list, then MAPS will select a rule based on your existing groups from the User/Group Rules list.

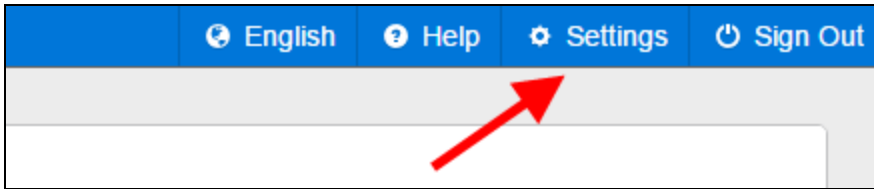
Note: User rules (if any) will take priority over the rules associated with the primary group.



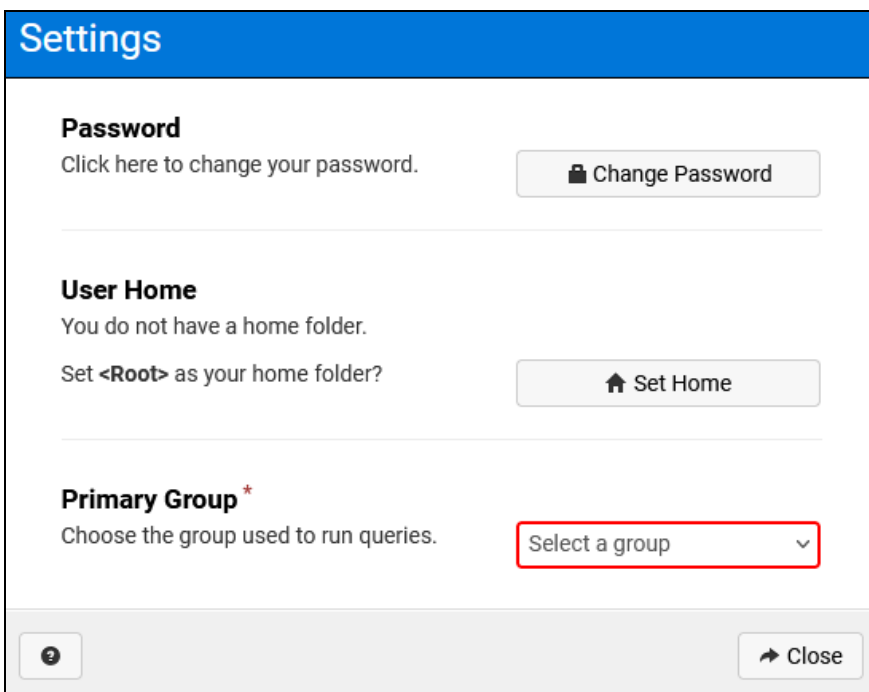
Example: In the image above the Finance group is selected. This group's sign in credentials rule is defined as **Use the MAPS user name and password**. So, when the Finance group is defined as a user's primary group in Argos, connecting to this data source will only follow the sign in credentials rule associated with the Finance group, instead of selecting one at random based off of all groups listed in the User/Group Rules list.

Selecting a Primary Group in the Argos Web Viewer

To select a primary group in the Web Viewer, first click the **Settings** button in the upper right corner of the screen:



Just like in the Argos client, the Web Viewer's **Primary Group** dropdown will only be visible when enabled in MAPS Config, and if the user belongs to two or more groups, excluding the **Everyone** group.



If these conditions are met, the Primary Group dropdown menu will be located on the bottom of the Settings dialog.

MAPS 6.10.2 Release Notes

MAPS Service 6.10.2.2678 / MAPS Config 6.10.2.1495 / eLauncher 6.10.0.4

MAPS

Enhancements

Area	Description	Issue number
Authentication	Buttons and text in MAPS Config that refer to the words Log In now say Sign In.	MAPS-3505
Database	Updated the MAPS Database Configuration utility to support MAPS 6.10.2.	MAPS-3508
Data Connections	Added a Primary group selection menu to the Groups tab, which when enabled will allow Argos users to assign one group to associate with upon each login.	MAPS-3425
SSO	MAPS Config now supports single sign-on and authentication through SAML servers.	MAPS-3460
SSO	When single sign-on is required on a SAML server, the eLauncher sign in screen now hides the username and password option.	MAPS-2419

Resolved Issues

Area	Description	Issue Number
Log Files	Socket Error #5 errors were sometimes appearing when using OpenSSL 1.1.1.	MAPS-3471
SAML	The Issuer field of the Edit Single Sign-On Server dialog is now case-sensitive.	MAPS-2418
SSO	CAS and SAML synchronized users were being prompted to change the password of the associated MAPS user.	MAPS-3461

Getting Help

For information on using the software, please refer to the product Help, which contains detailed information on all aspects of the product.

If you are having problems with the installation or configuration, you can search our [support site](#), which includes a knowledge base of common issues. If you are unable to find the solution, submit a HelpDesk request with a detailed explanation of the problem you are experiencing.

Please do not hesitate to contact the Evisions HelpDesk if any questions or problems arise. We are here to help you and want to ensure your success.

Can't find what you're looking for?

We would love to make our documentation better! If you have a moment to let us know what we missed or how we can make the help more useful, please email us at TechDocs@evisions.com.